



Rijksinstituut voor Volksgezondheid  
en Milieu  
*Ministerie van Volksgezondheid,  
Welzijn en Sport*



# Dutch Public Health Foresight Study-2020

*in the light of COVID-19*

Henk Hilderink



# Public Health Foresight Studies (PHFS)

- RIVM 25 years experience in PHFS
- COVID-19 new reality, other futures
- COVID-PHFS-2020
  - Exploring direct and indirect health & care effects
  - Short term (0-5 years) and mid/long term (10-20 years)
  - Goal: to support broader consideration of measures and to be better prepared in the future
- Addressing current events (short-cyclical products) and more extensive product in November





# Approach

- What are we facing in the coming years?
  - Different scenarios
- What are the main societal challenges?
  - Different (normative) values
  - Policy / intervention strategies
- What are chances and choices?
  - Win-win, win-lose

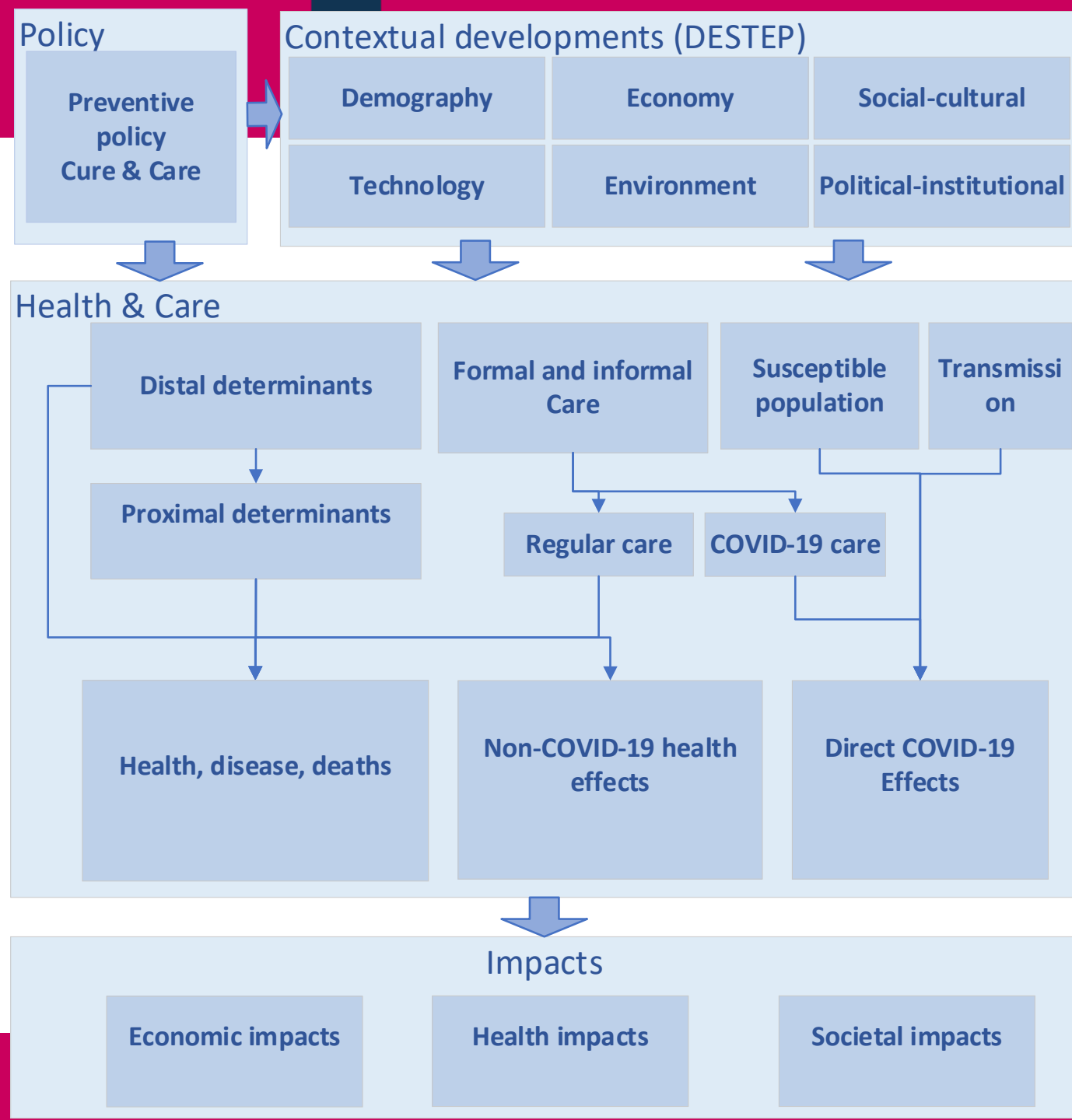




# Impacts

- Direct COVID-19 health impacts (infected, care capacity, Burden of Disease)
- Indirect health impacts (Non-COVID-19)
  - Distal / proximal health determinants
  - Downscaling / avoidance of regular health care
  - Mental/Occupational/Environmental/External
  - Loneliness, perceived health, autonomy
  - Health Inequalities
- Also positive impacts (e.g. cleaner air, innovation, cohesion)

# Conceptual model





## Data & information needs

- Good quality (comparable) data!
- Better understanding of changes in health care → health impacts
- Vulnerable groups

Stakeholder / expert workshops, e.g.:

- 2 Webinars: Future of Health Care in the Netherlands (13 May)
- Joint (RIVM, Euro Healthnet, EUPHA) foresight webinar:  
Pan-European COVID-19 Trends and Challenges (end June)
- Open to suggestions from the EHII network



# Thank you

[henk.hilderink@rivm.nl](mailto:henk.hilderink@rivm.nl)

[www.rivm.nl/en/foresight-studies](http://www.rivm.nl/en/foresight-studies)