

Multipurpose Camera & Scope powered by ri-screen and AGNES®



Product Features:

- Automatically integrates with additional modules of AGNES Interactive® software to share medical images and live streaming video in real-time with the remote specialist.
- Direct USB connection allows you to immediately view the medical images on a PC (eliminates the need for an SD memory card).
- 2 mega pixel CMOS image sensor captures high definition (1920p x 1080p) medical images.
- Interchangeable lenses accommodate multiple medical specialties including primary care, ear/nose/throat, dermatology, and ophthalmology.
- Built-in white LED illumination provides a crisp light source for clear medical images with true color representation.
- Large rear-facing viewing screen makes it easy to see what you are "looking at" through the lenses.

Image Functionality & Handset Features:

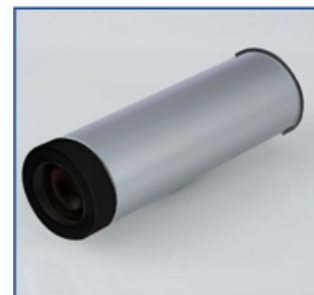
- 2 MPixel CMOS image sensor
- Image format: JPEG
- Video format: H.264
- Resolution: full HD true 1920x1080
- Dimensions: 3.5" x 1.7" x 8" (89mm x 44mm x 205mm)
- Weight: .56 lbs (254 g)
- Bayonet connector for attached optic modules
- 3.5" HD full color TFT-LCD display



Ophthalmoscope Lens:

Enables non-mydriatic fundus examinations with reflection-free imaging and a wide field of view to capture the appearance of optic disc, macula and retinal vasculature.

- Reflection-free imaging
- Not necessary to dilate pupils
- White and infrared LEDs for image targeting and capturing
- Resolution: full HD 1920 x 1080 pixels
- Field of view: 25°
- Diopter compensation: -20D to +20D
- Dimensions: 5.2" x 1.7" (133mm x 42mm)
- Weight: .26 lbs (120g)



AMD Global Telemedicine
321 Billerica Road
Chelmsford, MA 01824

Toll-Free: 1-866-449-8210
info@amdtelemedicine.com
www.amdtelemedicine.com